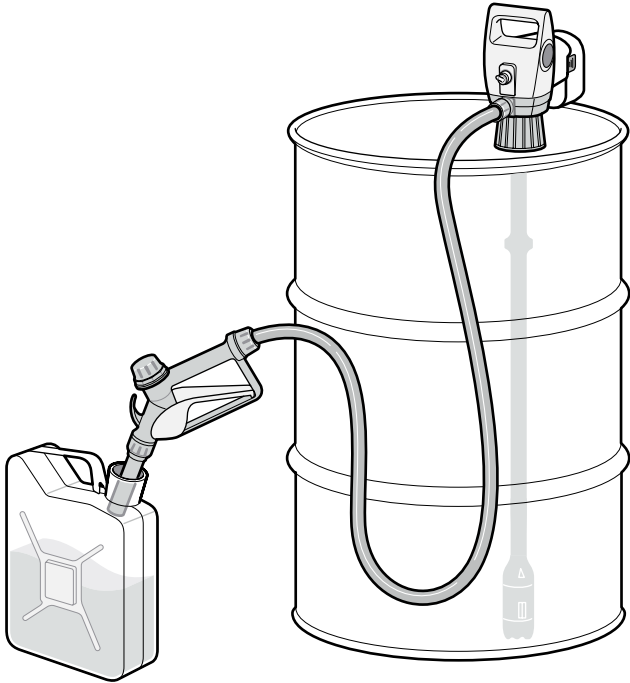


INSTRUCTION MANUAL

19.2V BATTERY OPERATED DRUM PUMP 205L

L-BDP205LI



19.2V BATTERY OPERATED DRUM PUMP 205L

L-BDP205LI

DESCRIPTION

The L-BDP205L is a 19.2V Battery Operated Drum pump, equipped with a telescopic suction tube, stainless steel spout nozzle, 2" buttress adapter, 2m delivery hose, 1 x 19.2V Lithium Ion battery and 1 x 19.2V Lithium Ion charger.

TECHNICAL INFORMATION

Delivery volume	Approx. 28liters at Water	Operating temperature	+5°C - 40°C
Suction pipe length	Approx. 850 - 1245mm	Operating voltage	DC19.2V
Discharge hose length	Approx. 2m	Fuse	5A
Applicable liquids	Diesel, UREA/DEF, Water, Kerosene, Antifreeze, Windshield washer fluid Mild detergents, Agricultural chemicals, and Light oils up to SAE 10.		



IMPORTANT

These instructions are to ensure the product is used correctly, safely, and to prevent any possible risk or damage to the user and/or others people. Our company shall not take any responsibility for any failure of product, malfunction and damages caused by improper use by the user or third parties.



DANGER

If the directions of this sign are not followed, fatal accidents can happen and the user may die or get seriously injured.



WARNING

If the directions of this sign are not followed, accidents can happen or the user can get injured.



CAUTION

If the directions of this sign are not followed, the product can get damaged or the user can get injured

DANGER

Do not use for flammable liquids or concentrated acids.

Be cautious. This pump does not have an explosion proof motor. etc.

Do not use near the flammable materials such as gasoline, gas,

Only use on applicable liquids written on the specifications.

WARNING

Make sure the pump is tightly secured to the drum(tank) before turning the pump on.

Do not refuel directly while the vehicle or equipment is turned on.

Do not leave the pump unattended.

Do not bend, bind or pull the power cord by force.

Make sure to use the pump on even surface.

Do not allow children to operate the product without adult supervision.

CAUTION

After using the pump, do not keep it on its side or upside down.

Make sure to remove any left-over liquid in the discharge hose after each use.

Do not alter or disassemble the pump.

Do not run the pump 'dry' or let the pump idle without transferring.

Make sure to turn off the power after using the pump.

Do not shock the pump.

Do not use deteriorated or contaminated liquids and fuels.

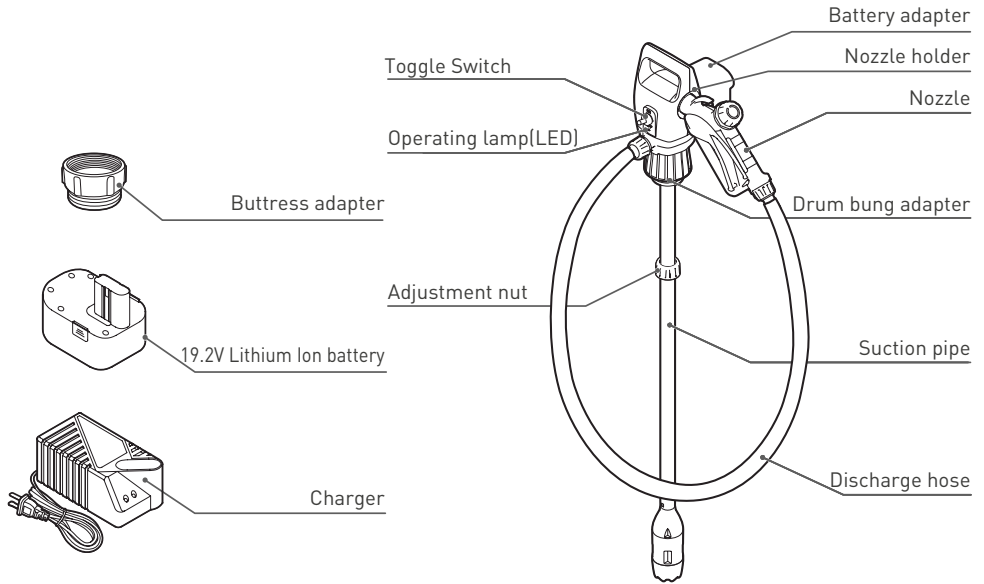
Do not place the pump in a wet area.

Do not use this pump for hot liquids above 40°C (104°F).

19.2V BATTERY OPERATED DRUM PUMP 205L

L-BDP205LI

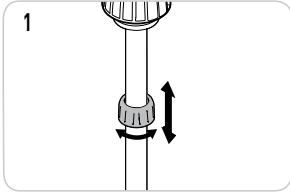
NAME OF PARTS



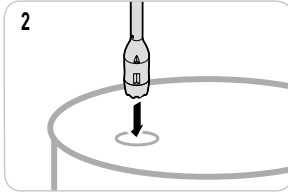
19.2V BATTERY OPERATED DRUM PUMP 205L

L-BDP205LI

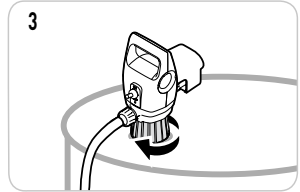
DIRECTIONS FOR USE



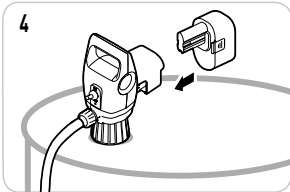
1 Adjust the length of the suction pipe to fit the drum (tank).



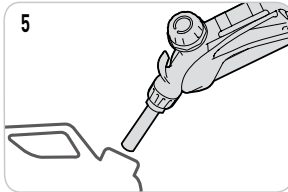
2 Insert the suction pipe into the drum (tank).



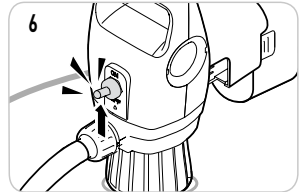
3 Tighten the drum bung adapter.



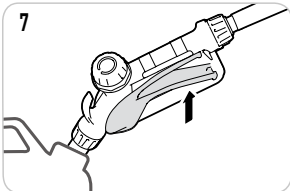
4 Connect the 19.2V battery into the battery adapter.



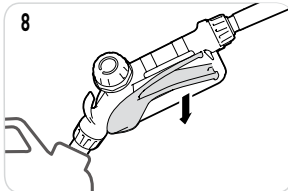
5 Place the nozzle into the receiving container to transfer liquid.



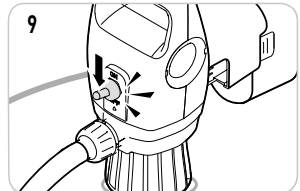
6 Toggle switch ON (Up).



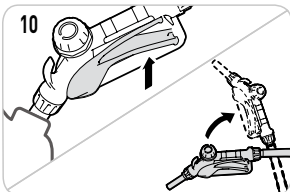
7 Pull the nozzle lever and start supplying the liquid.



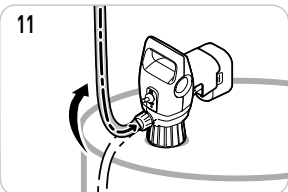
8 Release the lever when the liquid supply is completed.



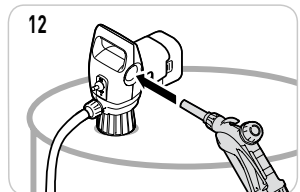
9 Toggle switch OFF (Down).



10 Pulling the lever of the nozzle, lift it up.



11 Let the left-over liquid in the hose flow back into the drum (tank).

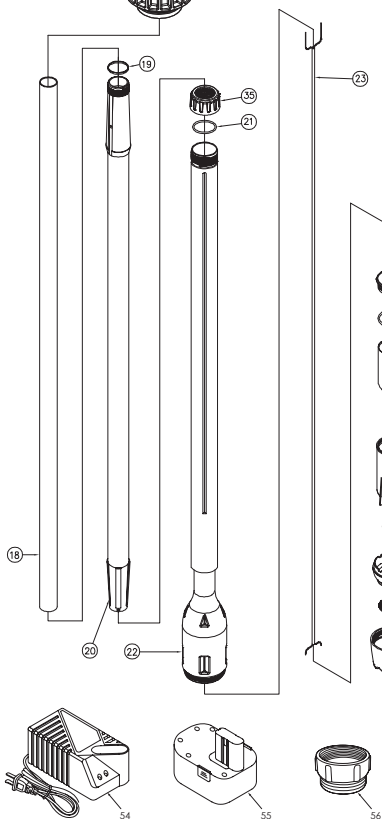
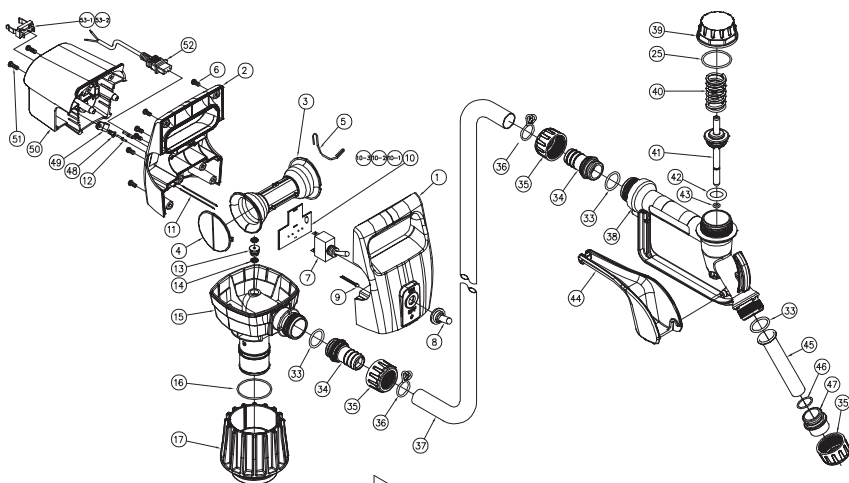


12 Insert the nozzle in the nozzle holder for storage.

19.2V BATTERY OPERATED DRUM PUMP 205L

L-BDP205LI

PARTS DIAGRAM



NO	PART NAME	RAW MAT'L	QTY
1	FRONT COVER	PP	1
2	BACK COVER	PP	1
3	NOZZLE HOLDER	POM	1
4	HOLDER COVER	PP	1
5	NOZZLE HOOK	STAINLESS STEEL(SUS 304)	1
6	SCREW	M4x10	1
7	TOGGLE SWITCH		1
8	WATERPROOF CAP		1
9	LED LAMP	Ø 3, RED	1
10	PCB ASS'Y	CEM	1
10-1	RESISTOR	10KΩ	1
10-2	FUSE HOLDER		1
10-3	FUSE	5A	2
11	CONNECTOR WIRE		1
12	CONNECTER PIN		2
13	MOTOR WIRE PACKING	VITON	2
14	WIRE CLAMP	STAINLESS STEEL(SUS 304)	2
15	BODY	POM	1
16	O-RING(BODY)	NBR	1
17	DRUM BUNG ADAPTER	PP	1
18	INNER PIPE	STAINLESS STEEL(SUS 304)	1
19	SUCTION PIPE PACKING	VITON	1
20	SUCTION PIPE(UPPER)	PE	1
21	O-RING(PIPE)	VITON	1
22	SUCTION PIPE(LOWER)	PE	1
23	MOTOR WIRE	PE	1
24	MOTOR COVER	POM	1
25	O-RING(MOTOR COVER, HANDLE)	VITON	2
26	MOTOR		1
27	MOTOR PACKING	VITON	1
28	MOTOR CASE	POM	1
29	IMPELLER	ZDC	1
30	IMPELLER CASING	POM	1
31	FILTER	STAINLESS STEEL(SUS 304)	1
32	END CAP	POM	1
33	O-RING(HOSE ADAPTER, SPOUT ADAPTER)	VITON	3
34	HOSE ADAPTER	PP	2
35	JOINT NUT	PP	3
36	HOSE CLAMP	STAINLESS STEEL(SUS 304)	2
37	DISCHARGE HOSE	PE	1
38	HANDLE	PP	1
39	NOZZLE CAP	PP	1
40	NOZZLE SPRING	STAINLESS STEEL(SUS 304)	1
41	NOZZLE PISTON	POM	1
42	O-RING(PISTON L)	VITON	1
43	O-RING(PISTON S)	VITON	1
44	NOZZLE LEVER	PP	1
45	SPOUT	STAINLESS STEEL(SUS304)	1
46	O-RING(SPOUT)	VITON	1
47	SPOUT ADAPTER	PP	1
48	SCREW	M4x10	1
49	CABLE CLAMP	PA	1
50	BATTERY ADAPTER	PP	1
51	SCREW	M4x15	2
52	CABLE CONNECTER	PVC	1
53-1	TERMINAL	BRONZE	2
53-2	TERMINAL BRACKET	PP	1
54	CHARGER		1
55	BATTERY	DC19.2V Ni-Cade	1
56	BUTTRISS ADAPTER	PP	1

19.2V BATTERY OPERATED DRUM PUMP 205L

L-BDP205LI

NOTES: