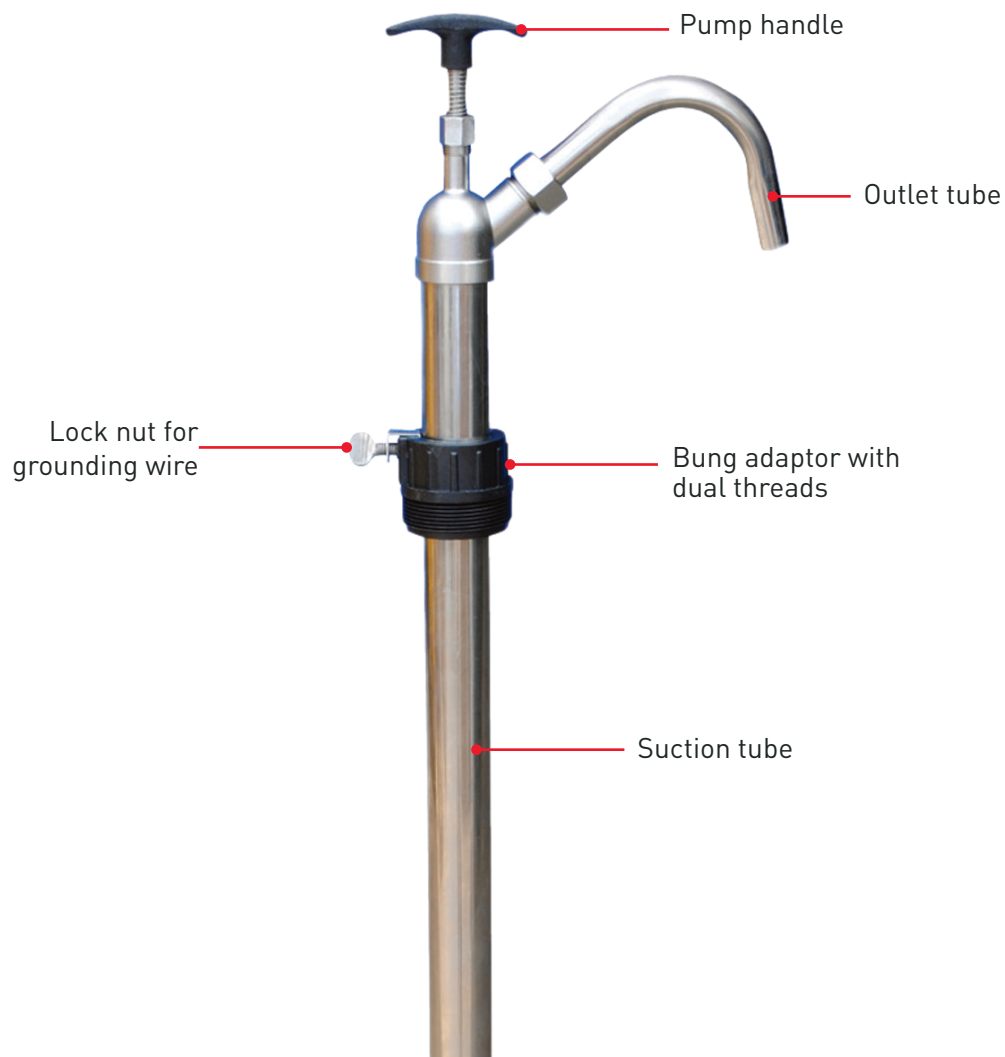

INSTRUCTION MANUAL

STAINLESS STEEL DRUM PUMP

L-SSHP



INTRODUCTION

Thank you for purchasing a Lubemate Stainless Steel Drum Pump. Your stainless steel drum pump has been designed to reliably dispense a wide range of fluids such as photographic chemicals, solvents, diesel, acetone, benzene, naptha, thinners, kerosene, Urea/DEF and light oils up to SAE40.

SPECIFICATIONS

Pump type:	Vertical lift piston pump
Wetted materials:	316 stainless steel, PTFE
Max temp:	60°C
Flow Rate:	Up to 750mL per stroke

STAINLESS STEEL DRUM PUMP

GENERAL INFORMATION

This self priming pump is supplied with a sliding bung adaptor consisting of 2 thread types (2" metal drum thread and a plastic drum type thread).

The extra tubes supplied with the pump, when inserted into the pump will allow you to restrict the output per stroke (when required).

Please take a few moments to read this manual before installing, and operating your stainless steel pump.

PERSONAL SAFETY

1. Wear safety glasses at all times when working with this pump.
2. Wear the proper protective clothing if working with chemicals.



WARNING

Failure to follow all general safety information can result in personal injury and/or property damage.

ASSEMBLY and OPERATION

1. Remove the pump from the carton and adjust the height of the bung assembly to be threaded into the drum.
2. Screw the outlet tube onto the pump head, (use the Teflon seal provided).
3. Move the T-handle up and down. The pump will prime within 4 pump strokes.
4. The pump is supplied with 5 extra flow control tubes which can be inserted in-between spring (6) and nut (3) according to the flow requirement.

Note: The each flow control tube will restrict the output by 100mL per stroke. Combination of tubes will reduce the output proportionally to the tubes used.

MAINTENANCE

The pump has been designed and built to require minimal maintenance.

PRIMING

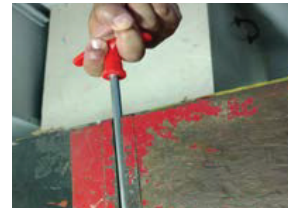
When using the pump for the first time or if using after a long period of time, the pump may need priming. Prime the pump by pumping the handle 4-5 times.

CAUTION

1. Never let any body part come in front of, or in contact with the pump outlet.
2. In case of an accident, immediately seek medical attention.

REPLACE SEALS

1. Carefully hold the piston rod (5) in a vice and remove T-handle (7) by unscrewing anti-clockwise.



2. Remove the spring (6) from the piston rod (5).



3. Unscrew the nut (3) from the piston rod (5).

3. Remove the damaged seal (4).



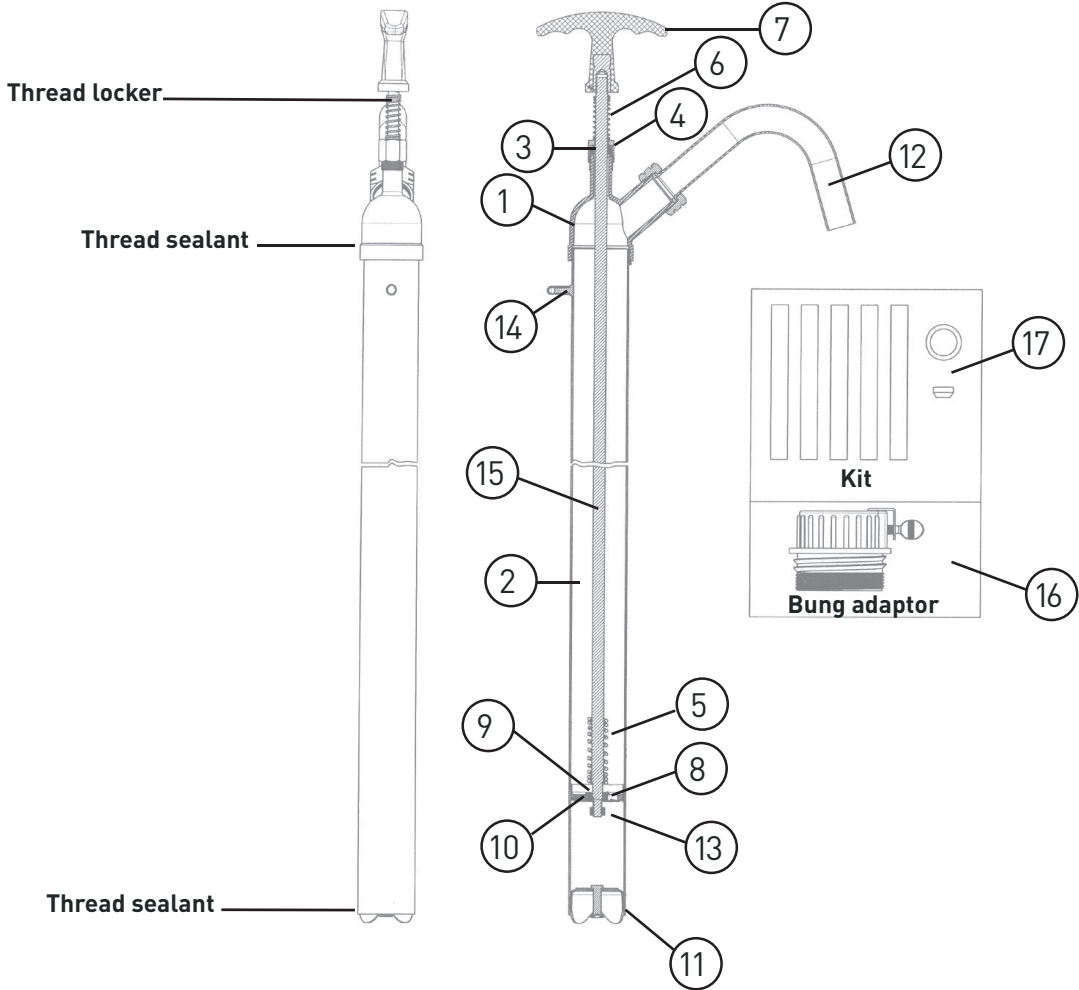
4. Slide the new seal (4) down the piston rod (5) into position.

5. Assembly is a reversal of disassembly steps 1-3.



STAINLESS STEEL DRUM PUMP

PARTS LIST



ITEM	DESCRIPTION
1	Head
2	Barrel
3	Nut
4	Seal
5	Rod
6	Spring
7	T - handle
8	Plunger
9	Steel washer

ITEM	DESCRIPTION
10	Washer
11	Foot valve assy
12	Outlet tube
13	Lock nut
14	Protecting cap
15	Spring
16	Bung adaptor assy
17	Kit

NOTE: No spare parts available

STAINLESS STEEL DRUM PUMP

TROUBLE SHOOTING GUIDE

TROUBLE	CAUSE	REMEDY
Pump does not dispense fluid.	1) Pump sucking air.	1) Tighten pump tube and check for leaks. Tighten all connections. Replace seals if required.
	2) Suction tube blocked.	2) Clean suction tube.
Handle difficult to move.	1) Pump has not been used for some time.	1) Inspect and clean residue from internal components. Flush to clean pump.



Lubemate® is a practical, cost-effective range of equipment brought to you by the trusted team at Macnaught.

All Lubemate products are specially selected by our experienced technical team at Macnaught®, ensuring they meet our strict quality standards.



Macnaught Pty Ltd

41-49 Henderson St, Turrella NSW 2205. Australia

Ph: 1800 185 102 **Fax:** +61 2 9597 7773

Email: info@macnaught.com.au **Website:** macnaught.com