

INSTRUCTION MANUAL

AIR / WATER HOSE REEL

L-PAW1014



AIR / WATER HOSE REEL

L-PAW1014

DESCRIPTION

Thank you for purchasing a Lubemate hose reel. Each reel is a quality UV Stabilised reel, supplied complete with a delivery hose, feeder hose and mounting bracket.

FEATURES AND BENIFITS

1. The hose reel is UV stabilised.
2. The reel is easy to use positive latch and a built in hose layering mechanism to prevent hose bunching.
3. The new speed control device means automatic rewinding of the hose in a constant speed and safer way.
4. Durable construction, made from high quality impact resistant polypropylene, light in weight and more compact.
5. A powerful spring winds the hose back into the drum.



IMPORTANT

Please read the instruction carefully before using your new hose reel. The information contained will help you in the safe operation of your hose reel. Please retain this manual for future reference.

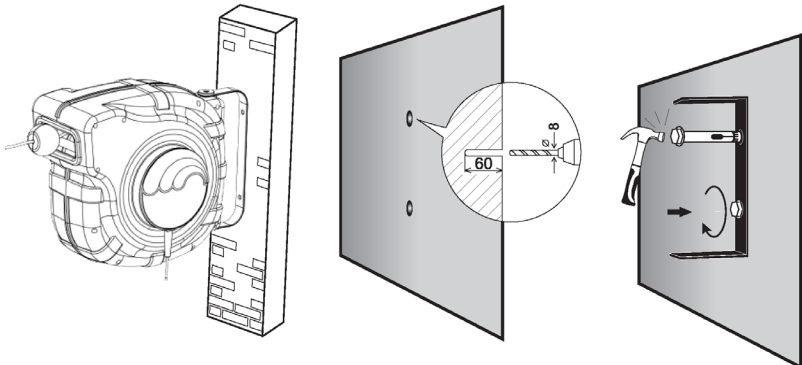


IMPORTANT

To prevent injury or damage do not release the hose during rewinding.

1. Do not disassemble hose reel.
2. Ensure the reel or hose is not in contact with any sharp objects or exposed to high temperatures.
3. Do not drop this reel or damage will occur.
4. Turn off air supply after use or at the end of the day.

REEL MOUNTING DIAGRAM



INSTALLATION

1. Ensure the reel is to be mounted in a safe location. Ensure there is enough space (>65cm) for the bracket and for the reel to swivel 180°.
2. Drill 2 holes in the wall approximately 50mm deep. Check the wall bracket provided for the hole pitch dimensions.
3. Securely fit the wall bracket to the wall, then secure the reel to the bracket.

TECHNICAL INFORMATION

Type: Air/Water
L-PAW1014 (10mm x 14m) - Inlet/Outlet 1/4"BSPT (M)
Maximum working pressure - 174 psi (1200 kPa)

BOX CONTENTS

1. Retractable hose reel
2. Feeder hose (fitted)
3. Mounting wall bracket
4. Instruction manual

OPERATION

To operate, pull your hose out to the desired length and allow the hose to latch. When finished, pull the hose to release the latch and allow the hose to recoil into the reel.

MAINTENANCE

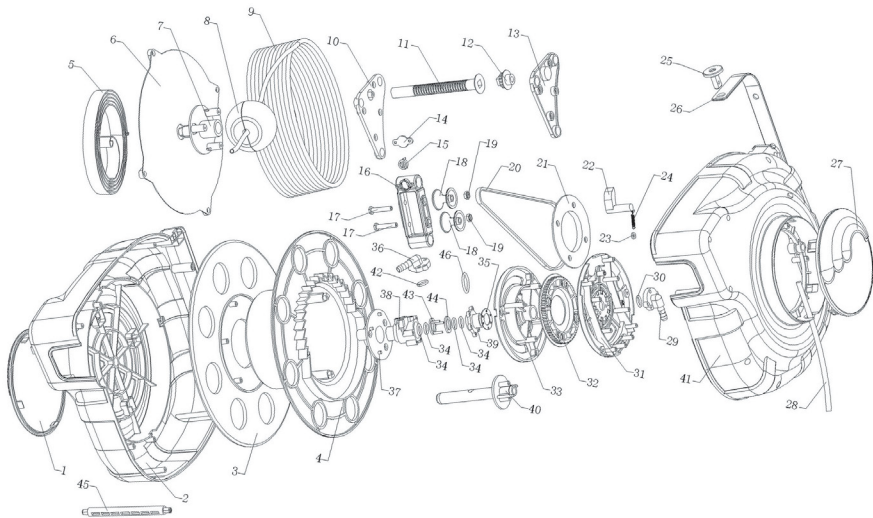
Before carrying out any maintenance turn off the air supply and release the line pressure

1. Turn off the air supply at the end of each day.
2. Wipe down the hose and case periodically with a soft towel, you can use a mild detergent to clean the reel if required.
3. Check weekly for the correct operation of the reel.
4. Check weekly that the hose is in good condition.

AIR / WATER HOSE REEL

L-PAW1014

PARTS DIAGRAM






- | | | | |
|-------------------------------------|------------------------------------|--------------------------|----------------------|
| 1. Right decorated cover | 13. Left duplex screw support seat | 25. Support bracket seat | 37. Mid axle bracket |
| 2. Right cover | 14. Transfer block cover | 26. Bracket | 38. Mid axle |
| 3. Wire core cap | 15. Transfer block | 27. Left decorated cover | 39. Mid axle cap |
| 4. Wire core | 16. Tracking device | 28. Hose | 40. Axel core |
| 5. Coil spring | 17. Screw | 29. Connector | 41. Left cover |
| 6. Coil spring cap | 18. Rotate wheel | 30. Seal loop | 42. Seal loop |
| 7. Coil spring axle core | 19. Nut | 31. Axle core fixer | 43. Triangle gasket |
| 8. Locating ball | 20. Driving belt | 32. Gear plate | 44. Flat gasket |
| 9. Hose | 21. Regulate cap | 33. Gear plate bracket | 45. Guide track |
| 10. Right duplex screw support seat | 22. Auto-latch jaw | 34. Seal loop | 46. Seal loop |
| 11. Duplex screw | 23. Pull spring ring | 35. Metal gasket | |
| 12. Pinion | 24. Pull spring | 36. Connector | |

Note: No spare parts available
Diagram for illustration purposes only

AIR / WATER HOSE REEL

L-PAW1014

FURTHER HOSE REELS AVAILABLE IN THIS RANGE

PRODUCT CODE	IMAGE	DESCRIPTION
L-PAW1030		The L-PAW1030 air hose reel is the ideal choice for small workshop applications. The reel is UV stabilised has a hose layering mechanism which prevents hose bunching and is supplied with a 10mm x 30m hose assembly and 10mm x 2m feeder hose, with a working pressure of 174psi (1200kpa). The mounting bracket supplied allows the reel to pivot 180 degrees.
L-PAW1220		The L-PAW1220 air hose reel is the ideal choice for small workshop applications. The reel is UV stabilised has a hose layering mechanism which prevents hose bunching and is supplied with a 12.5mm x 20m hose assembly and 12.5mm x 2m feeder hose, with a working pressure of 174psi (1200kpa). The mounting bracket supplied allows the reel to pivot 180 degrees.
L-PDW1225		The L-PDW1225 domestic water reel is the ideal choice for market garden or domestic use. The reel is UV stabilised has a hose layering mechanism which prevents hose bunching and is supplied with a 12.5mm x 25m hose assembly and 12.5mm x 2m feeder hose, quick connect fittings and garden nozzle. The mounting bracket supplied allows the reel to pivot 180 degrees.

For Warranty Terms and Conditions refer to
www.lubematebymacnaught.com.au