

INSTRUCTION MANUAL

DOMESTIC WATER HOSE REEL

L-PDW1225



DOMESTIC WATER HOSE REEL

L-PDW1225

DESCRIPTION

Thank you for purchasing a Lubemate domestic water hose reel. This reel is a quality UV stabilised reel, supplied complete with a delivery hose, feeder hose, mounting bracket, quick connect hose fittings and spray nozzle.

FEATURES AND BENEFITS

1. The hose reel is UV stabilised.
2. The reel is easy to use positive latch and a built in hose layering mechanism to prevent hose bunching.
3. The new speed control device means automatic rewinding of the hose in a constant speed and safer way.
4. Durable construction made from high quality impact resistant polypropylene, light weight and compact.
5. Comes with a convenient handle for portable use.
6. A powerful spring winds the hose back into the drum.



IMPORTANT

Please read the instruction carefully before using your new hose reel. The information contained will help you in the safe operation of your hose reel. Please retain this manual for future reference.



IMPORTANT

To prevent injury or damage do not release the hose during rewinding.

1. Do not disassemble hose reel.
2. Ensure the reel or hose is not in contact with any sharp objects or exposed to high temperatures
3. Do not drop this reel or damage will occur.
4. Turn off water supply after use.

TECHNICAL INFORMATION

Type: Domestic Water (12.5mm x 25m)

Supplied with quick connect fittings and spray nozzle

Maximum working pressure - 87 psi (600 kPa)

Weight approximately 10kg

INSTALLATION

1. Ensure the reel is to be mounted in a safe location. Ensure there is enough space (>80cm) for the bracket and for the reel to swivel 180°.
2. Drill holes at the same pitch as the wall bracket provided.
3. Securely fit the wall bracket to the wall, then secure the reel to the bracket.

BOX CONTENTS

1. Retractable hose reel
2. Feeder hose (fitted)
3. Quick connect hose fittings and spray nozzle
4. Mounting wall bracket
5. Instruction manual

OPERATION

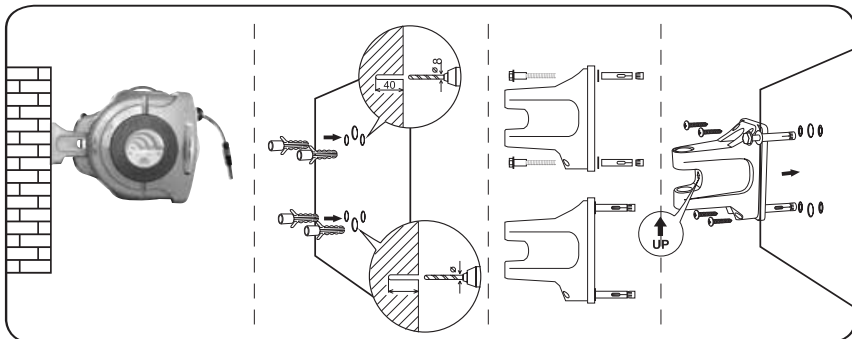
To operate, pull your hose out to the desired length and allow the hose to latch. When finished, pull the hose to release the latch and allow the hose to recoil into the reel.

MAINTENANCE

Before carrying out any maintenance turn off the water supply and release the line pressure

1. Turn off the water supply after use.
2. Wipe down the hose and case periodically with a soft towel, you can use a mild detergent to clean the reel if required.
3. Check weekly for the correct operation of the reel.
4. Check weekly that the hose is in good condition.

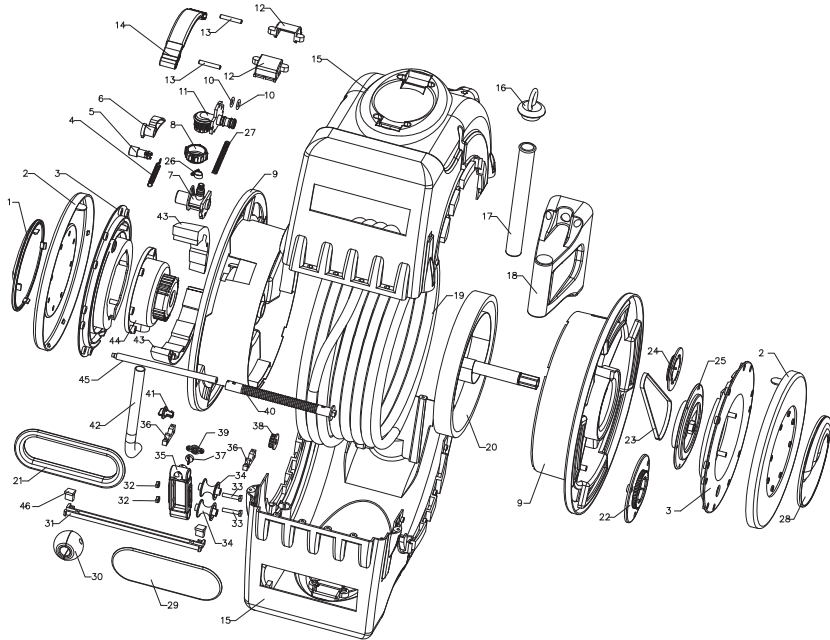
REEL MOUNTING DIAGRAM



DOMESTIC WATER HOSE REEL

L-PDW1225

PARTS DIAGRAM



- | | | | | |
|---------------------------|--------------------|-----------------------|--------------------------|---------------------------|
| 1. Right decorated casing | 11. hose connector | 22. gear plate | 32. wheel cover | 42. water hose |
| 2. outer flank cap | 12. handle seat | 23. driving belt | 33. wheel axle | 43. whorl wheel |
| 3. inner flank cap | 13. handle | 24. gear plate belt | 34. rotate wheel | 44. hose wheel cap |
| 4. pull spring | 14. outer shield | 25. regulate cap | 35. tracking device | 45. plastic pole |
| 5. jaw turn shaft | 16. pull ring | 26. latch hose collar | 36. screw compress cover | |
| 6. vine claw | 17. aluminum hose | 27. spring | 37. transfer block | 46. button of guide track |
| 7. wire-core connector | 18. support seat | 28. left deck cap | 38. pinion | |
| 8. locknut | 19. water hose | 29. seal cap | 39. compress cover | |
| 9. wire-core | 20. coil spring | 30. locating ball | 40. duplex screw | |
| 10. seal gasket | 21. seal hose | 31. guide track | 41. whorl cap | |




Note: No spare parts available

Diagram for illustration purposes only

DOMESTIC WATER HOSE REEL

L-PDW1225

FURTHER HOSE REELS AVAILABLE IN THIS RANGE

PRODUCT CODE	IMAGE	DESCRIPTION
L-PAW1030		The L-PAW1030 air hose reel is the ideal choice for small workshop applications. The reel is UV stabilised has a hose layering mechanism which prevents hose bunching and is supplied with a 10mm x 30m hose assembly and 10mm x 2m feeder hose, with a working pressure of 174psi (1200kpa). The mounting bracket supplied allows the reel to pivot 180 degrees.
L-PAW1220		The L-PAW1220 air hose reel is the ideal choice for small workshop applications. The reel is UV stabilised has a hose layering mechanism which prevents hose bunching and is supplied with a 12.5mm x 20m hose assembly and 12.5mm x 2m feeder hose with 1/2" BSP inlet and outlet connections with a working pressure of 174psi (1200kpa). The mounting bracket supplied allows the reel to pivot 180 degrees.
L-PAW1014		The L-PAW1014 air/water reel is a small compact reel, ideal for small workshop applications. The reel is UV stabilised has a hose layering mechanism which prevents hose bunching and is supplied with a 10mm x 14m hose assembly and 10mm x 1m feeder hose with 1/4" BSP inlet and outlet connections, with a working pressure of 174psi (1200kPa). The mounting bracket supplied allows the reel to pivot 180 degrees.

For Warranty Terms and Conditions refer to
www.lubematebymacnaught.com.au