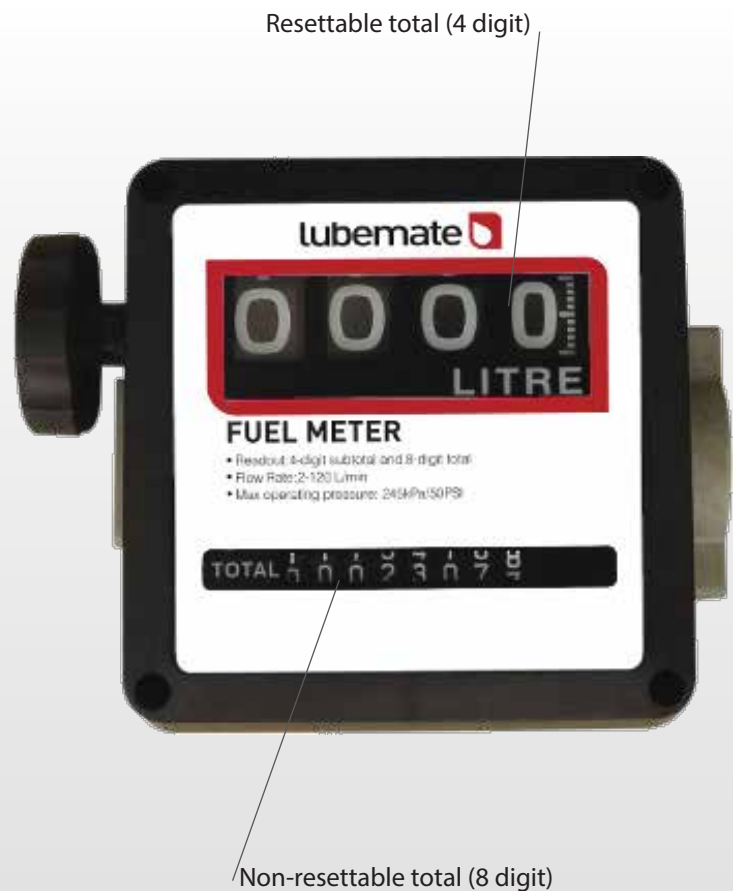


Diesel Fuel Meter

L-FM25

- Flow rate between 20 - 120L/min
- Max. operating pressure 345 kPa (50 psi)
- 1" BSP (F) inlet / outlet
- Resettable batch total (4 digit)/non-resettable total (8 digits)
- Mechanical display with accuracy of +/- 1%
- Suitable for either diesel or kerosene



12
months
warranty